

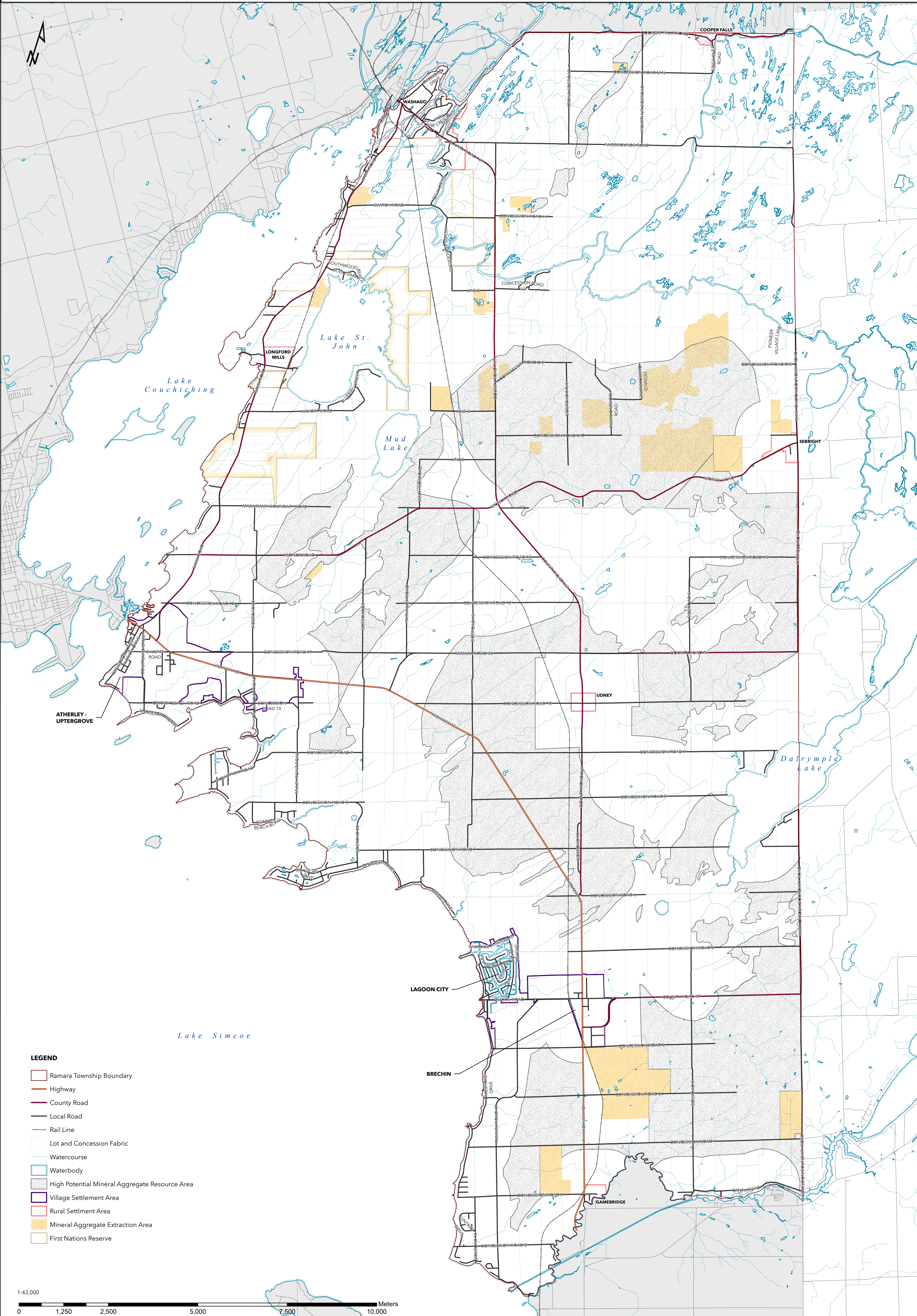
# THE TOWNSHIP OF RAMARA OFFICIAL PLAN

**DRAFT**



SCHEDULE "D" - HIGH POTENTIAL MINERAL AGGREGATE RESOURCE AREAS

Date Exported: 2025-01-14



- LEGEND**
- Ramara Township Boundary
  - Highway
  - County Road
  - Local Road
  - Rail Line
  - Lot and Concession Fabric
  - Watercourse
  - Waterbody
  - High Potential Mineral Aggregate Resource Area
  - Village Settlement Area
  - Rural Settlement Area
  - Mineral Aggregate Extraction Area
  - First Nations Reserve

