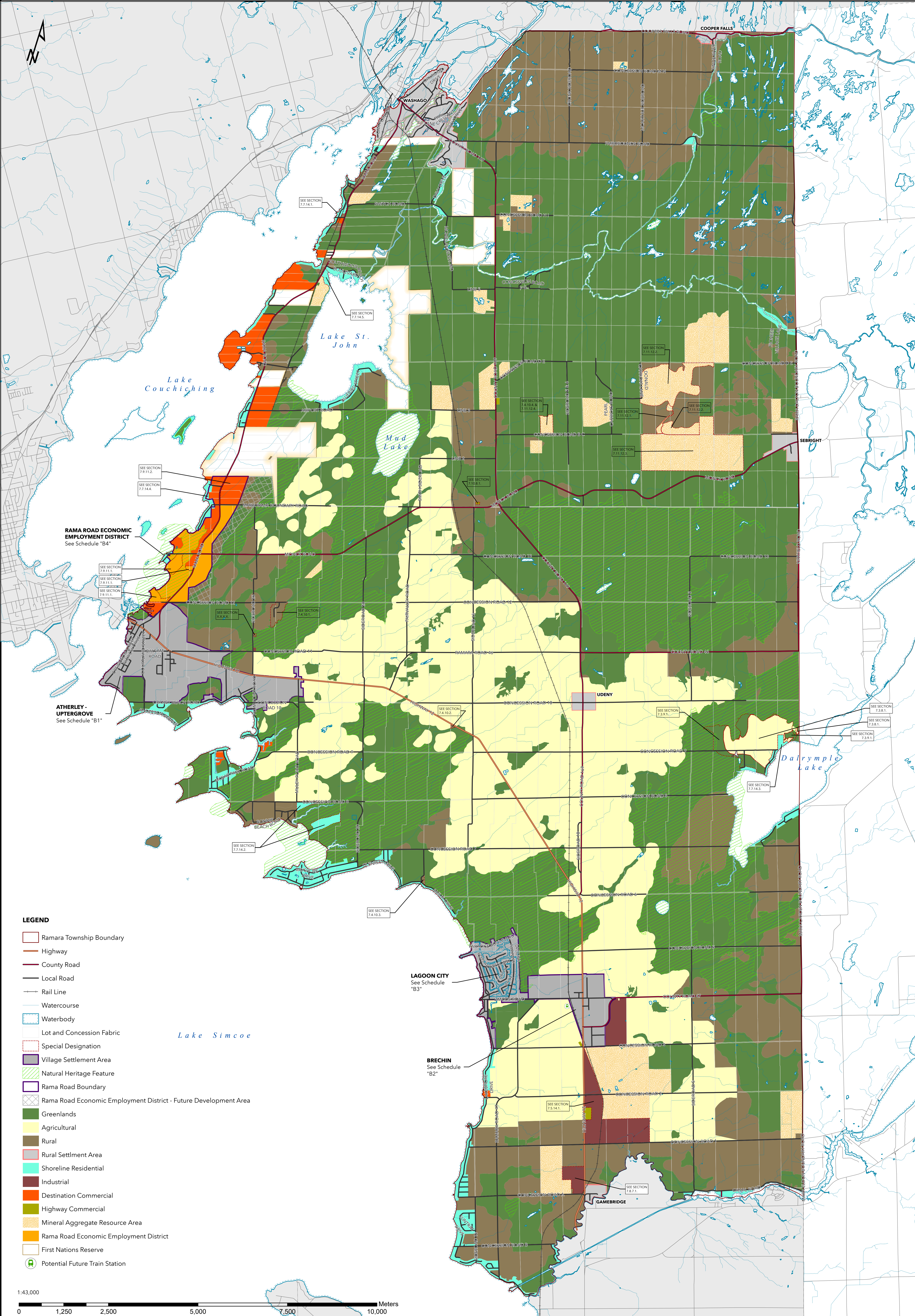


THE TOWNSHIP OF RAMARA OFFICIAL PLAN

SCHEDULE "A1" - LAND USE

Date Exported: 2024-07-05

DRAFT



- LEGEND**
- Ramara Township Boundary
 - Highway
 - County Road
 - Local Road
 - Rail Line
 - Watercourse
 - Waterbody
 - Lot and Concession Fabric
 - Special Designation
 - Village Settlement Area
 - Natural Heritage Feature
 - Rama Road Boundary
 - Rama Road Economic Employment District - Future Development Area
 - Greenlands
 - Agricultural
 - Rural
 - Rural Settlement Area
 - Shoreline Residential
 - Industrial
 - Destination Commercial
 - Highway Commercial
 - Mineral Aggregate Resource Area
 - Rama Road Economic Employment District
 - First Nations Reserve
 - Potential Future Train Station

